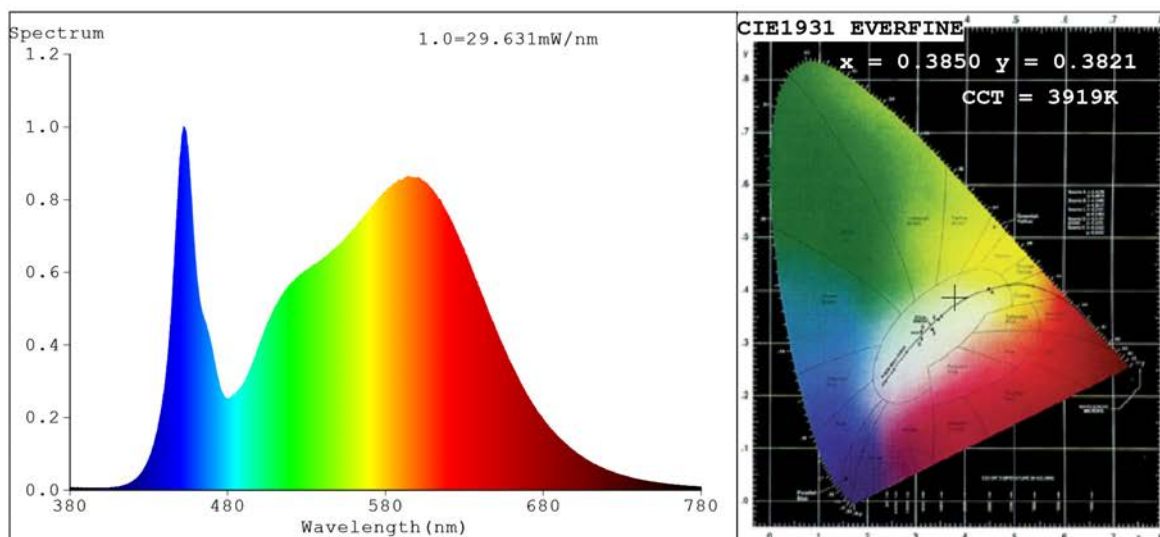


Spectrum Test Report



Color Parameters:

Chromaticity Coordinate: $x=0.3850$ $y=0.3821$ $u'=0.2260$ $v'=0.5046$
 CCT=3919K (Duv=0.0012) Dominant WL:Ld =578.8nm Purity=30.2%
 Ratio:R=18.6% G=77.7% B=3.6%; Peak WL:Lp=452.3nm FWHM=18.9nm
 Render Index:Ra=83.6 CRI=77.1 TM30:Rf=82 Rg=95
 R1 =82 R2 =90 R3 =96 R4 =82 R5 =82 R6 =86 R7 =86
 R8 =64 R9 =10 R10=77 R11=81 R12=61 R13=84 R14=98 R15=76

Photo Parameters:

Flux = 1456 lm Eff. : 121.20 lm/W Fe = 4.384 W Scotopic:2443.9 S/P:1.6785

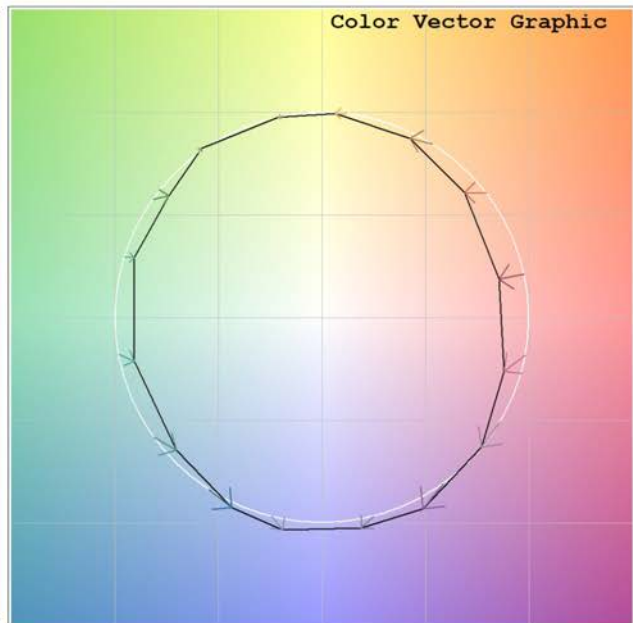
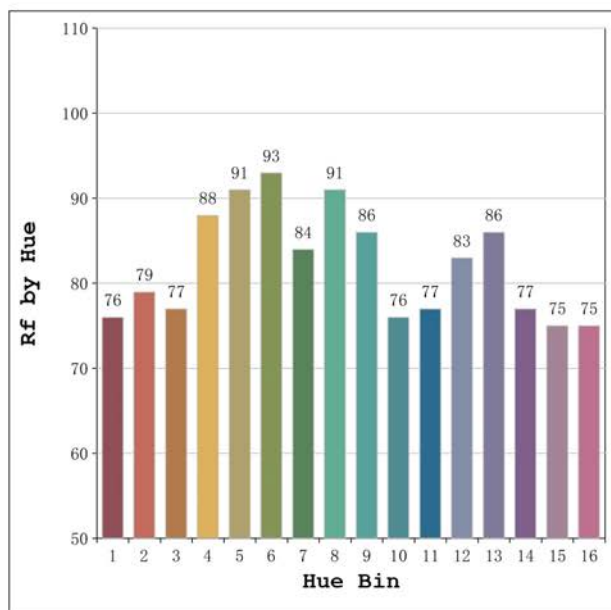
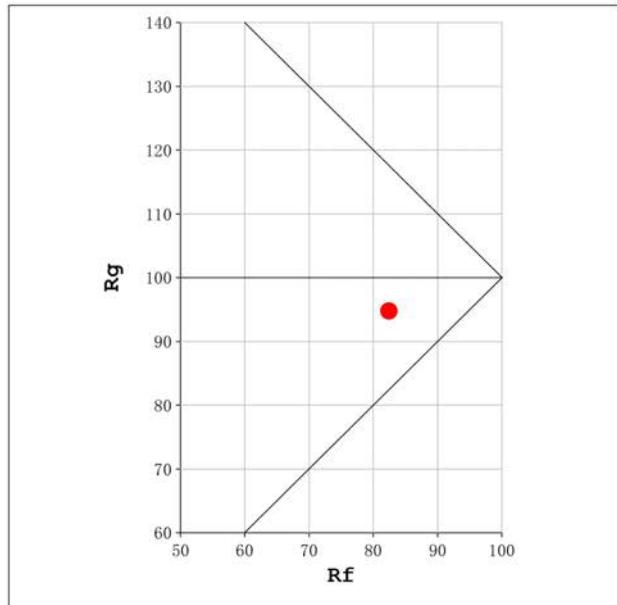
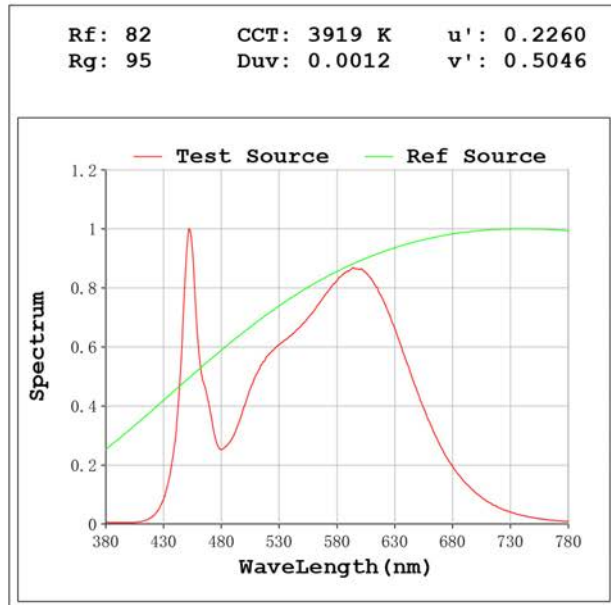
Electrical parameters:

V = 47.998 V I = 0.2503 A P = 12.01 W PF = 1.000

Status: Integral T = 965 ms Ip = 51087 (78%)

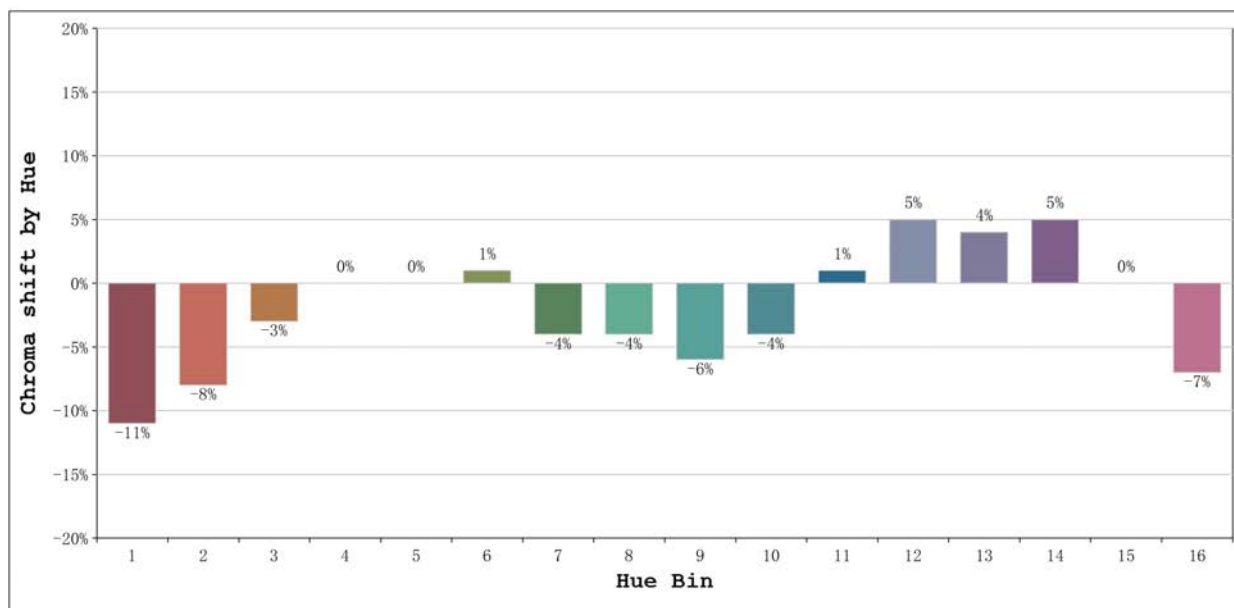
Model:Castellón IP67 4000K
 Tester:Sergio Carneros
 Temperature:27Deg
 Manufacturer:Luz Negra S.L

Number: 33.212
 Date:2024-05-27 14:46:11
 Humidity:40%
 Remarks:100cm de tira flexible



Model:Castellón IP67 4000K
 Tester:Sergio Carneros
 Temperature:27Deg
 Manufacturer:Luz Negra S.L

Number: 33.212
 Date:2024-05-27 14:46:11
 Humidity:40%
 Remarks:100cm de tira flexible



Hue Bin	Hue Angle	Rf	Graphic shift(%)	
			Chroma	Hue
1	0.0° - 22.5°	76	-11	0
2	22.5° - 45.0°	79	-8	6
3	45.0° - 67.5°	77	-3	10
4	67.5° - 90.0°	88	0	6
5	90.0° - 112.5°	91	0	3
6	112.5° - 135.0°	93	1	-2
7	135.0° - 157.5°	84	-4	-5
8	157.5° - 180.0°	91	-4	0
9	180.0° - 202.5°	86	-6	5
10	202.5° - 225.0°	76	-4	11
11	225.0° - 247.5°	77	1	14
12	247.5° - 270.0°	83	5	6
13	270.0° - 292.5°	86	4	-6
14	292.5° - 315.0°	77	5	-14
15	315.0° - 337.5°	75	0	-14
16	337.5° - 360.0°	75	-7	-9

Model:Castellón IP67 4000K
Tester:Sergio Carneros
Temperature:27Deg
Manufacturer:Luz Negra S.L

Number: 33.212
Date:2024-05-27 14:46:11
Humidity:40%
Remarks:100cm de tira flexible